

NEW

Traffic Monitoring... Unleashed!



BLACK CAT II

Next Generation Radar Recorder



JAMAR
Technologies, Inc.



Making Data Collection Easier

The Black Cat II Radar Recorder – Highly Accurate Volume & Speed Data without Road Tubes

Short term counts for volume or speed data are a common need. One traditional way to address this need has been the use of road tube counters. However, this requires installing the road tubes onto the road, which can be a time consuming and dangerous process.

The Black Cat II Radar Recorder helps address this need in a new way. Through the use of radar sensing technology, the Black Cat II Radar Recorder is able to collect highly accurate volume and speed information without anyone ever having to enter the road.

Simply mount the Black Cat II to a nearby pole and aim it toward the road to count. It will then begin recording vehicle-by-vehicle data that can be analyzed in many ways.

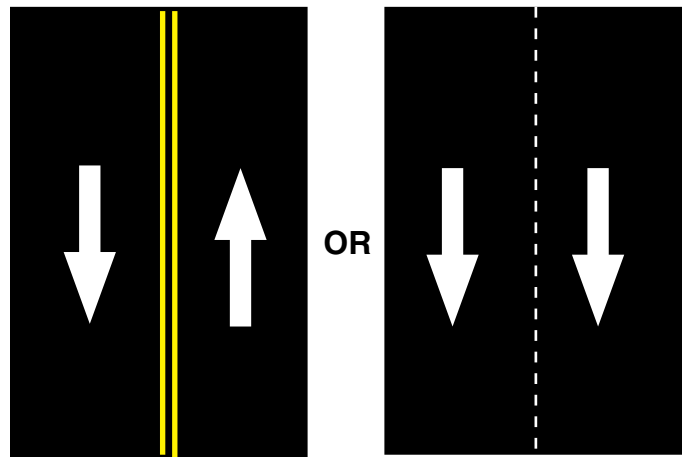
Detects Two Lanes of Traffic In Same Direction

The new Black Cat II Radar Recorder has the ability to detect the specific lane a vehicle is travelling in. This allows the Black Cat II to record not only two lanes of bidirectional traffic, but two lanes of traffic travelling in the same direction. This expands the applications where the Black Cat II Radar can be used in place of road tubes or other in-road sensors to now include multi-lane highways.

For example, if you have a divided four lane highway (two lanes in each direction), Black Cat II units can be positioned on each side of the highway and allow you to collect all four lanes of data.

- New Compact Design
- Detects Lane Position of Vehicles
- Detects 2 Lanes in Same Direction
- Modem Option for Remote Access
- Stores Multiple Data Files
- More Accurate Vehicle Lengths
- Solar Power Option
- 98% Count Accuracy

Black CAT II



View Data In Real Time Using an internet Connection

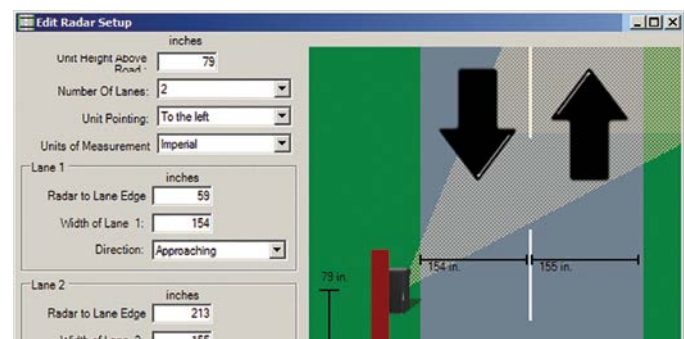
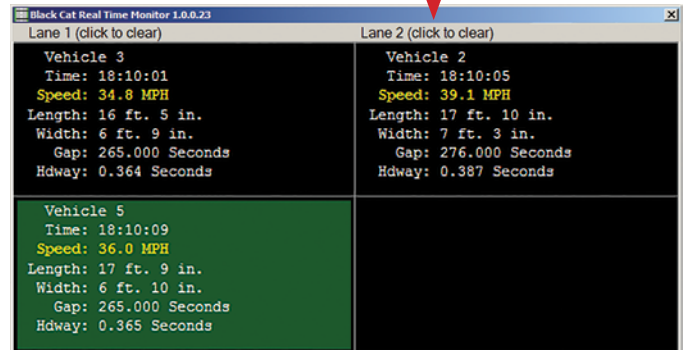
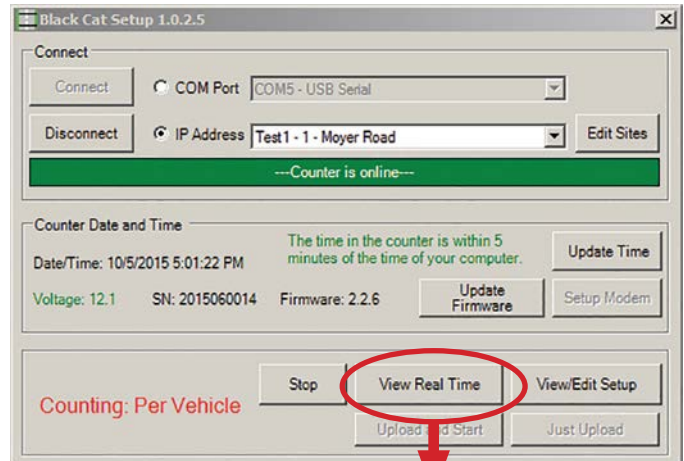
The original JAMAR Radar Recorder required you to physically connect a cable to the unit to be able to view data in real time and download. Later, we added the ability to do this using a wireless Bluetooth connection. However, this still meant you had to be relatively close to the unit to make a connection. Now, the Black Cat II Radar introduces the ability to remotely connect to the unit from the comfort of your office, or any where else in the world!

The Black Cat II has the option of using an internal GSM modem, which allows the unit to have a static IP address assigned. What this means is that by simply entering the IP address into the TRAXPro software you can connect to your Black Cat II from any computer with Internet access.

Once connected, you can do any of the functions that can be done using a hard wire connection. This includes checking the battery voltage of the unit, making sure the unit is still running, monitoring data in real time and downloading saved data files for processing and analysis.

New Compact Design

Our older model Radar Recorders have used the same form factor for many years, so when it came time to design a new model one of things we looked at was changing the size. With the new Black Cat II we've done just that, creating a unit that's 1/3 smaller in size and also lighter, which makes installation easier. The new design also incorporates a new, heavy duty Storm Case™ and more robust, press & pull case latches.



Specifications

Configuration: 2 Lanes, bi- or same direction
Memory Size: 2GB (approx. 200,000,000 vehicles)
Data Storage: Up to 256 Data Files
Speed Range: 5 – 130mph
Radar Range: 100 Feet
Operating Temperature: -40 F (-40C) to +158 F (+70C)
Count Accuracy: (98%, ignoring obscuration)
Speed Accuracy: +/- 2% at 95% confidence
Length Accuracy: +/- 16 Inches or +/- 5% which ever is the greater at a 95% confidence
Software: TRAXPro
Remote Access: Optional GSM Modem
Wireless Access: Bluetooth
Battery: 12 Volt
Battery Charge Life: 10 Days
Power Option: Optional Solar Panel
Weight: 12 lbs.
Approval: CE and FCC Approved

Comprehensive Reports

When you are done viewing your data, the TRAXPro software can be used to create comprehensive reports and graphs that show detailed breakdowns of traffic data.

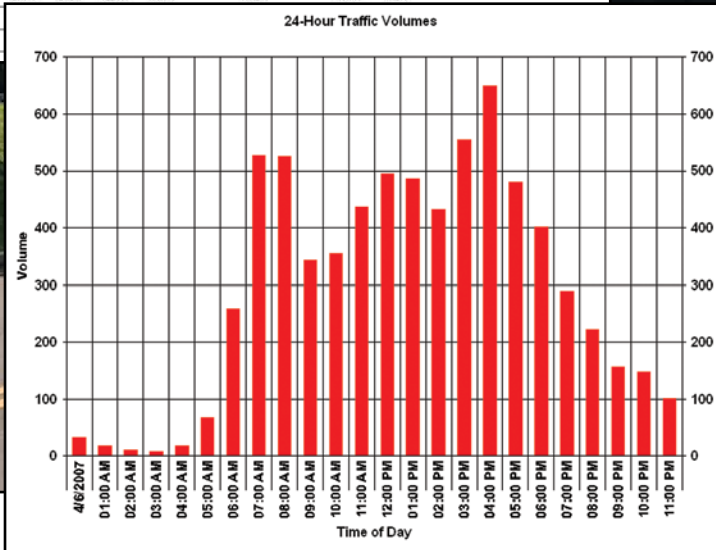
You can make a variety of volume data reports, including such details as hourly totals with peak information, and a number of speed data reports, with various percentiles are other types of statistics. Finished reports can be directly printed or saved in an Adobe PDF format.

Page 1

JAMAR Technologies, Inc.

Latitude: 40° 12.950 North
Longitude: 79° 9.552 West

Start Time	Mon	Tue	Wed	Thu	Fri	Average	Sat	Sun	Week
02-Apr-07	03-Apr-07	04-Apr-07	05-Apr-07	06-Apr-07	07-Apr-07	07-Apr-07	08-Apr-07	08-Apr-07	Average
12:00 AM	9	24	29	23	33	24	53	63	34
01:00	9	12	9	18	19	13	21	46	19
02:00	8	11	9	9	11	10	30	22	14
03:00	3	5	5	6	8	5	10	9	7
04:00	12	23	24	23	18	20	8	7	16
05:00	73	77	77	75	68	74	28	9	58
06:00	318	367	380	340	259	335	71	45	256
07:00	624	750	799	735	527	690	110	46	516
08:00	602	714	698	624	520	633	164	111	401
09:00	293	406	367	364	344	355	188	143	301
10:00	253	288	291	302	355	294	312	192	282
11:00	327	347	378	397	437	376	388	202	341
12:00 PM	463	506	479	522	465	463	351	230	435
01:00	380	439	389	450	488	428	375	281	388
02:00	365	392	371	429	432	398	374	280	378
03:00	517	545	552	563	555	534	337	271	469
04:00	473	721	706	754	649	701	302	232	577
05:00	794	975	984	863	480	819	277	144	645
06:00	487	588	536	559	402	514	293	186	436
07:00	275	365	321	307	290	312	290	241	298
08:00	175	188	227	236	223	210	190	202	206
09:00	125	146	146	205	156	156	189	122	156
10:00	68	72	75	137	148	100	153	89	103
11:00	49	46	51	63	102	62	89	42	63
Day Total	6007	7066	7875	7959	7022	7553	4532	3195	6469
%Avg	91.4%	105.9%	104.3%	105.4%	93.0%				
Wkly Day						188.2%	69.7%	46.2%	
%Avg	106.3%	123.0%	121.2%	122.5%	89.0%				
Week									
AM Peak	07:00								
Vol	624								
PM Peak	17:00								
Vol	794								



Direction 1, Cleverton 2

Latitude: 40° 12.950 North
Longitude: 79° 9.552 West

Start Time	1	18	31	28	31	35	41	46	51	56	61	66	71	76	80	85	89	93	95	Total	Percent	Percent
04/01/07	15	20	25	30	35	41	46	51	56	61	66	71	76	80	85	89	93	95	99	399	25	55
01:00	0	0	0	0	0	0	0	0	0	0	0	0	0	0	0	0	0	0	0	0	0	0
02:00	0	0	0	0	0	0	0	0	0	0	0	0	0	0	0	0	0	0	0	0	0	0
03:00	0	0	0	0	0	0	0	0	0	0	0	0	0	0	0	0	0	0	0	0	0	0
04:00	0	0	0	0	0	0	0	0	0	0	0	0	0	0	0	0	0	0	0	0	0	0
05:00	0	0	0	0	0	0	0	0	0	0	0	0	0	0	0	0	0	0	0	0	0	0
06:00	0	0	0	0	0	0	0	0	0	0	0	0	0	0	0	0	0	0	0	0	0	0
07:00	27	6	24	149	384	194	81	227	10	5	0	0	0	0	0	0	0	0	799	46	51	
08:00	16	6	7	16	89	262	222	63	15	7	1	0	0	0	0	0	0	0	698	45	49	
09:00	4	1	1	1	12	125	137	51	23	3	0	0	0	0	0	0	0	0	287	48	52	
10:00	1	1	0	3	25	81	119	38	20	5	0	0	0	0	0	0	0	0	291	48	53	
11:00	5	2	2	2	25	97	142	72	18	3	0	0	0	0	0	0	0	0	370	48	51	
12 PM	9	5	5	2	24	137	203	76	15	1	2	0	0	0	0	0	0	0	479	47	50	
13:00	7	3	3	3	34	106	139	76	14	1	0	0	0	0	0	0	0	0	398	46	50	
14:00	8	1	2	3	38	102	129	67	18	3	0	0	0	0	0	0	0	0	391	48	51	
15:00	8	1	0	3	38	127	245	107	20	2	1	0	0	0	0	0	0	0	552	48	50	
16:00	14	2	3	56	176	333	137	19	2	0	0	0	0	0	0	0	0	0	708	47	50	
17:00	36	5	2	6	35	289	430	164	34	3	0	0	0	1	0	0	0	0	964	47	50	
18:00	17	6	1	1	11	141	198	120	28	6	2	0	0	0	0	0	0	0	535	49	53	
19:00	4	0	0	0	1	16	67	132	68	28	3	2	0	0	0	0	0	0	331	49	53	
20:00	2	0	0	0	0	15	54	86	51	30	5	1	2	0	0	0	0	0	227	51	55	
21:00	1	0	0	0	2	15	32	51	30	10	1	1	1	0	0	0	0	0	145	48	54	
22:00	0	0	0	0	0	7	15	26	11	10	1	1	0	0	0	0	0	0	75	52	55	
23:00	0	0	0	0	0	5	12	12	5	5	1	1	0	0	0	0	0	0	51	54	58	
Total	171	32	37	80	843	2224	2620	1268	381	89	26	11	3	2	1	1	1	1	7975			
Percent	2.7%	0.5%	0.6%	1.3%	13.7%	35.7%	37.7%	18.7%	4.8%	1.1%	0.4%	0.1%	0.0%	0.0%	0.0%	0.0%	0.0%	0.0%				
AM Peak	07:00	11:00	08:00	07:00	07:00	07:00	06:00	07:00	05:00	07:00	06:00	07:00	06:00	05:00	04:00	07:00						
Vol	27	24	149	266	222	81	27	149	5	2	0	0	0	0	0	799						
PM Peak	17:00	12:00	12:00	17:00	14:00	17:00	17:00	17:00	18:00	12:00	20:00	17:00	18:00	12:00	23:00	17:00						
Vol	36	5	5	6	38	268	430	164	34	3	2	2	1	1	1	964						
Percent	17%	2%	3%	3%	19%	13%	13%	13%	13%	1%	1%	1%	1%	1%	1%	13%						
Total	171	32	37	80	843	2224	2620	1268	381	89	26	11	3	2	1	7975						
Percent	2.2%	0.4%	0.5%	1.0%	10.6%	28.2%	33.7%	16.5%	4.8%	1.1%	0.3%	0.1%	0.0%	0.0%	0.0%							
15th Percentile																				30	MPH	
50th Percentile																				23	MPH	
85th Percentile																				45	MPH	
95th Percentile																				52	MPH	
Statistics																				10	MPH	36-45
10 MPH Pace Speed																				514		
Number in Pace																				64		
Percent in Pace																				62		
Number of Vehicles > 35 MPH																				622		
Percent of Vehicles > 35 MPH																				67		
Mean Speed(Average)																				41	MPH	

