



data:\users\moverholt\JAMAR\RACPro\Sample Data\Sample File.rac

Sample File: "Other":  Notes:

8/24/2016 Start Location: 1500 Industry Rd. End Location: 1500 Industry Rd.

Mapping:  ☐ Show Tracking Events

Event Code	Event Description	Interval Distance (Feet)	Total Distance (Feet)	DMI Clock	Elapsed Time	Speed (MPH)	Latitude	Longitude	Fx	Sats
-1		0	0	00:00:36	00:00:00	0	40.263632	-75.282965	1	9
2	Stop Sign	173	173	00:01:24	00:00:48	3	40.263717	-75.282492	2	9
3	Stop Sign	1366	1539	00:02:09	00:01:33	4	40.260680	-75.285013	2	8
4	35 MPH Speed Limit Sign	401	1940	00:02:23	00:01:47	27	40.261373	-75.285963	2	9
5	Narrow Bridge	254	2194	00:02:30	00:01:54	25	40.261940	-75.286528	2	8
6	35 MPH Speed Limit Sign	1385	3579	00:02:58	00:02:22	32	40.264603	-75.290038	2	9
7	Railroad Crossing	714	4293	00:03:15	00:02:39	23	40.265975	-75.291882	2	8
8	Stop Sign	234	4527	00:03:23	00:02:47	9	40.266437	-75.292485	2	9
	Railroad Crossing	223	4750	00:03:32	00:02:56	25	40.266898	-75.292142	2	9
	40 MPH Speed Limit Sign	622	5372	00:03:46	00:03:10	33	40.268200	-75.290717	2	9
	Signal Ahead	1655	7027	00:04:23	00:03:47	5	40.271795	-75.287033	2	9
	Signal Ahead	160	7187	00:04:52	00:04:16	22	40.271672	-75.286623	2	9
	45 MPH Speed Limit Sign	157	7344	00:04:56	00:04:20	29	40.271422	-75.286182	2	9
	45 MPH Speed Limit Sign	1583	8927	00:05:24	00:04:48	40	40.268710	-75.281773	2	8
	School Zone	639	9566	00:05:34	00:04:58	41	40.267618	-75.279985	2	9
	45 MPH Speed Limit Sign	1263	10829	00:05:56	00:05:20	33	40.265457	-75.276442	2	8
	Signal Ahead	690	11519	00:06:18	00:05:42	18	40.264290	-75.274482	2	9
	35 MPH Speed Limit Sign	151	11670	00:06:23	00:05:47	23	40.263967	-75.274503	2	9
	35 MPH Speed Limit Sign	771	12441	00:06:39	00:06:03	33	40.262352	-75.276283	2	9
	35 MPH Speed Limit Sign	796	13237	00:06:54	00:06:18	37	40.260683	-75.278125	2	9
	35 MPH Speed Limit Sign	730	14733	00:07:29	00:06:53	27	40.259302	-75.281565	2	9
	35 MPH Speed Limit Sign	766	14003	00:07:09	00:06:33	32	40.259028	-75.279823	2	9

Units: Feet - MPH GPS Format: Decimal Degrees Schemes: \*Presets with Google I Define "0" Event:

## Sign/Highway Inventory & Mapping

- Download Data from the RAC Geo II
- Analyze and Edit Survey Events
- Map Events with GPS Data
- Generate Comprehensive Reports



**JAMAR**  
Technologies, Inc.



*Making Data Collection Easier*



RACPro is a powerful software program designed by JAMAR Technologies to allow you to interface with the RAC Geo II distance measuring instrument. This program can be used to retrieve stored data events from the RAC Geo II to a computer.

Once the data is in RACPro, it can be easily edited in a familiar spreadsheet style, and GPS Comprehensive reports can then be generated. The software comes complete with RAC USB power\ download cable & User's Manual.

## Edit Data in Familiar Style

The program's familiar spreadsheet-style interface makes viewing and editing data very user-friendly, even for a casual user.

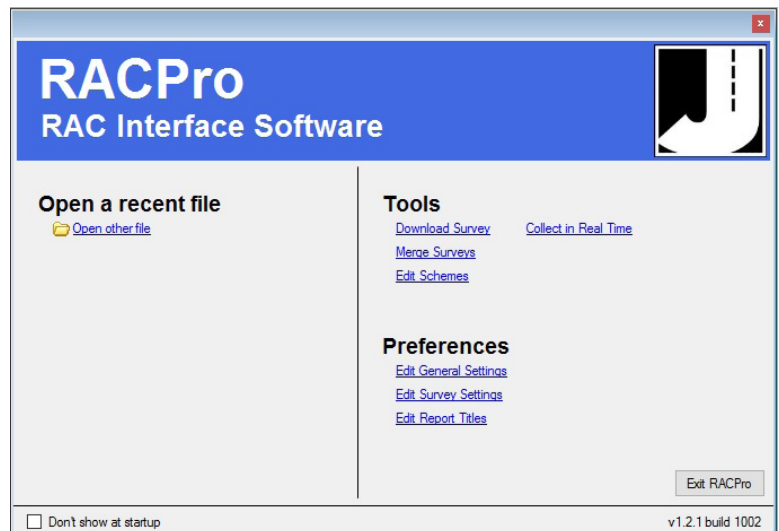
Additional information can be directly added to your data file, and data can be sorted into a number of formats for analysis. You can also easily change measurement units, GPS format and more on the fly.

## Produce Reports

A comprehensive report of your survey data can be easily created and output to either a printer or electronic PDF format.

The finished report can show event codes and descriptions, any comments you have entered, interval distance from one event to the next, total distance from the start of the survey to the event, elapsed and real time, traveling speed at the time of the event, the GPS coordinates of the event and GPS accuracy information.

Setup options allow you to include or exclude any of these categories on the report.



File Info

Survey Name: Sample File Start Date: 8/24/2010 Start Time: 12:00:00 AM Start Location: 1500 Industry Rd End Location: 1500 Industry Rd

Mapping Map It

Show GPS events

Event #	Event Code	Event Description	Comment	Interval Distance (Feet)	Total Distance (Feet)	DMI Clock	Elapsed Time	Speed (MPH)	Latitude	Longitude	HDDP	Fix	Satellites
1	-1			0	0	00:00:36	0	0	40.263632	-75.282985	3.9	1	9
2	1	Stop Sign		173	173	00:01:24	48	3	40.253717	-75.282492	3.3	2	9
3	1	Stop Sign		1366	1539	00:02:09	93	4	40.260680	-75.285013	3.4	2	8
4	35	35 MPH Speed Limit Sign		401	1940	00:02:23	107	27	40.261373	-75.285963	3.5	2	9
5	12	Narrow Bridge Begin		254	2194	00:02:30	114	25	40.261940	-75.286528	3.5	2	8
6	13	Narrow Bridge End		168	2362	00:02:34	118	27	40.262275	-75.286940	3.5	2	9
7	35	35 MPH Speed Limit Sign		1217	3579	00:02:58	142	32	40.264603	-75.290038	3.7	2	9
8	4	Railroad Crossing		714	4293	00:03:15	159	23	40.265976	-75.291882	4	2	8
9	1	Stop Sign		234	4527	00:03:23	167	9	40.266437	-75.292485	4.1	2	9
10	4	Railroad Crossing		223	4750	00:03:32	176	25	40.266999	-75.292142	4.2	2	9
11	40	40 MPH Speed Limit Sign		622	5372	00:03:46	180	33	40.268200	-75.290717	4.2	2	9
12	3	Traffic Signal		1655	7027	00:04:23	227	5	40.271795	-75.287033	3.9	2	9
13	3	Traffic Signal		180	7187	00:04:52	286	22	40.271672	-75.286623	3.1	2	9
14	45	45 MPH Speed Limit Sign		157	7344	00:04:56	280	29	40.271422	-75.286182	3.1	2	9
15	45	45 MPH Speed Limit Sign		1593	8927	00:05:24	289	40	40.268710	-75.281773	3.4	2	8
16	16	School Zone Begin		639	9566	00:05:34	290	41	40.267618	-75.279985	3.6	2	9
17	17	School Zone End		1155	10721	00:05:54	318	35	40.265635	-75.276780	4.1	2	7
18	45	45 MPH Speed Limit Sign		108	10829	00:05:56	320	33	40.265457	-75.276442	4.2	2	8

Data Editor Schemes Define "0" Event

Add Insert Delete Clear All

Default

JAMAR Technologies, Inc.  
www.jamartech.com  
800-776-0940

Survey Name: Sample File  
Start Date: 8/24/2010

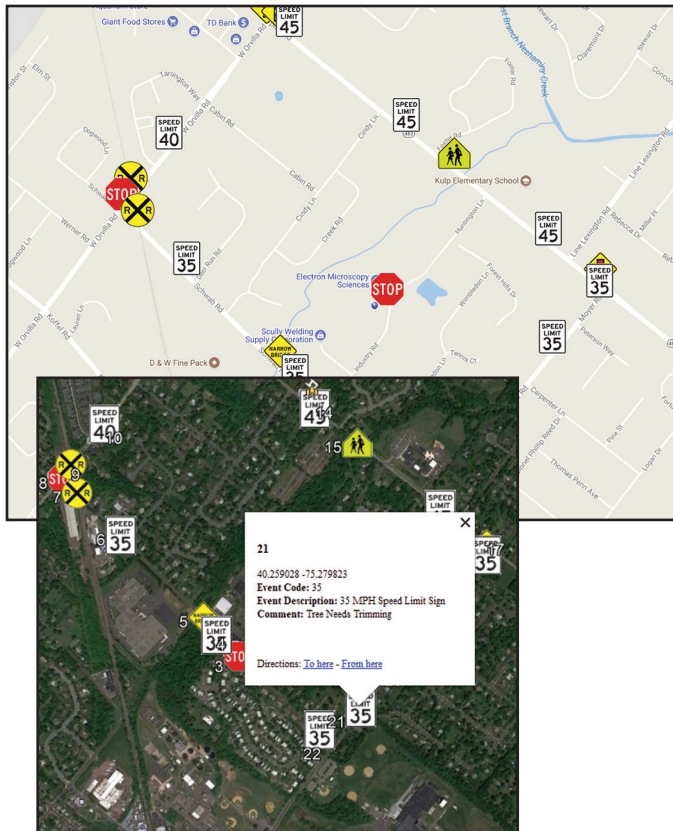
Start Location: 1500 Industry Rd.  
End Location: 1500 Industry Rd.  
Distance units: Feet  
Speed units: MPH

Event #	Event Code	Event Description	Comment	Interval Distance	Total Distance	DMI Clock	Elapsed Time	Speed	Latitude	Longitude
1	-1			0	0	00:00:36	00:00:00	0	40.263632*	-75.282985*
2	1	Stop Sign		173	173	00:01:24	00:00:48	3	40.263717*	-75.282492*
3	1	Stop Sign		1366	1539	00:02:09	00:01:33	4	40.260680*	-75.285013*
4	35	35 MPH Speed Limit Sign		401	1940	00:02:23	00:01:47	27	40.261373*	-75.285963*
5	12	Narrow Bridge Begin		254	2194	00:02:30	00:01:54	25	40.261940*	-75.286528*
6	13	Narrow Bridge End		168	2362	00:02:34	00:01:58	27	40.262275*	-75.286940*
7	35	35 MPH Speed Limit Sign		1217	3579	00:02:58	00:02:22	32	40.264603*	-75.290038*
8	4	Railroad Crossing		714	4293	00:03:15	00:02:58	23	40.265976*	-75.291882*
9	1	Stop Sign		234	4527	00:03:23	00:02:47	9	40.266437*	-75.292485*
10	4	Railroad Crossing		223	4750	00:03:32	00:02:56	25	40.266999*	-75.292142*
11	40	40 MPH Speed Limit Sign		622	5372	00:03:46	00:03:10	33	40.268200*	-75.290717*
12	3	Traffic Signal		1655	7027	00:04:23	00:03:47	5	40.271795*	-75.287033*
13	3	Traffic Signal		180	7187	00:04:52	00:04:16	22	40.271672*	-75.286623*
14	45	45 MPH Speed Limit Sign		157	7344	00:04:56	00:04:30	29	40.271422*	-75.286182*
15	45	45 MPH Speed Limit Sign		1593	8927	00:05:24	00:04:48	40	40.268710*	-75.281773*
16	16	School Zone Begin		639	9566	00:05:34	00:04:58	41	40.267618*	-75.279985*
17	17	School Zone End		1155	10721	00:05:54	00:05:18	35	40.265635*	-75.276780*
18	45	45 MPH Speed Limit Sign		108	10829	00:05:56	00:05:30	33	40.265457*	-75.276442*
19	3	Traffic Signal		690	11519	00:06:18	00:05:42	18	40.264730*	-75.274482*
20	35	35 MPH Speed Limit Sign		151	11670	00:06:23	00:05:47	23	40.263867*	-75.274503*
21	35	35 MPH Speed Limit Sign		711	12441	00:06:39	00:06:03	37	40.263539*	-75.273259*
22	35	35 MPH Speed Limit Sign		796	13237	00:06:54	00:06:18	37	40.260883*	-75.278125*
23	35	35 MPH Speed Limit Sign	Tree Needs Trimming	766	14003	00:07:09	00:06:33	32	40.259028*	-75.279823*
24	35	35 MPH Speed Limit Sign		730	14733	00:07:28	00:06:53	27	40.258302*	-75.281565*

## Map Survey Data

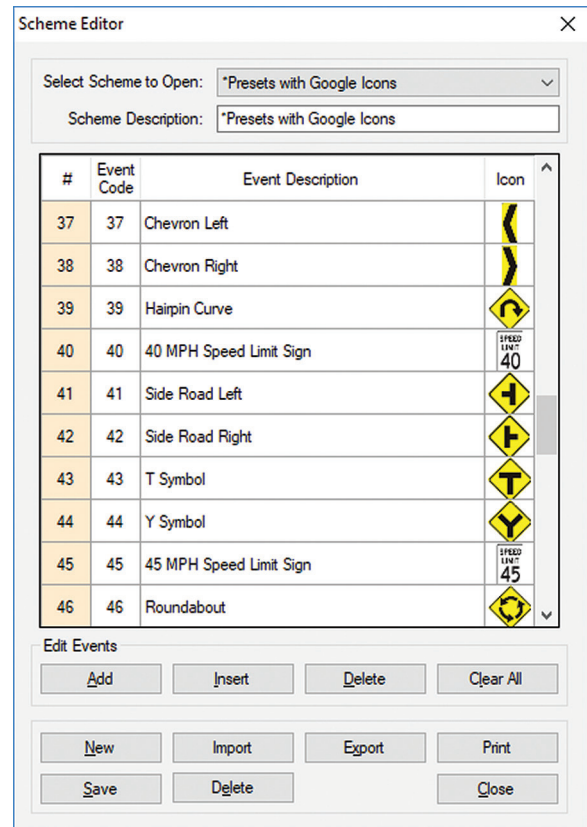
Data that has been collected with GPS coordinates can be mapped using Google Maps, allowing you to get a highly visual representation of the data you've collected.

Icons used to map the events you record can be customized to whatever graphics you desire, and text information can be shown.



## Custom Schemes

With RACPro, you can use different sets of Event Descriptions for different surveys. These sets of descriptions are called Schemes. RACPro allows you to create custom schemes for any events you want to record. You can also assign icons to the events, which will then be placed on the map when you map your data. These icons can be traffic signs or any other graphic you would like.





**Dreading your  
upcoming SIGN  
INVENTORY?**

**The RAC Geo II  
DMI makes it  
EASY!**

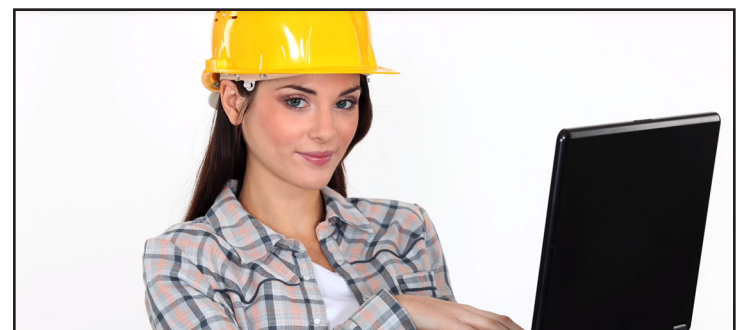
**Collect Sign Data  
& GPS Coordinates  
as you drive...**

**One CLICK to  
see your data  
in Google Maps...**

**It really is that  
SIMPLE!**



Event #	Event Code	Event Description	Comment	Interval Distance (Feet)	Total Distance (Feet)	DMI Clock	Elapsed Time	Speed (MPH)	Latitude	Longitude	HDOF	Fx	Satellites
1	-1			0	0	00:00:36	0	0	40.263632°	-75.262995°	3.9	1	9
2	1	Stop Sign		173	173	00:01:24	48	3	40.263717°	-75.262492°	3.3	2	9
3	1	Stop Sign		1366	1366	00:02:09	93	4	40.263889°	-75.260131°	3.4	2	8
4	35	35 MPH Speed Limit Sign		401	1940	00:02:23	107	27	40.261373°	-75.259982°	3.5	2	9
5	12	Narrow Bridge Begin		254	2194	00:02:30	114	25	40.261940°	-75.260528°	3.5	2	8
6	13	Narrow Bridge End		188	2382	00:02:34	118	27	40.262275°	-75.260340°	3.5	2	9
7	35	35 MPH Speed Limit Sign		1217	3579	00:02:58	142	32	40.264603°	-75.260038°	3.7	2	9
8	4	Railroad Crossing		714	4293	00:03:15	159	23	40.265875°	-75.261882°	4	2	8
9	1	Stop Sign		234	4527	00:03:23	167	9	40.266437°	-75.262485°	4.1	2	9
10	4	Railroad Crossing		223	4750	00:03:32	176	25	40.266898°	-75.263142°	4.2	2	9
11	40	40 MPH Speed Limit Sign		622	5372	00:03:46	189	33	40.268200°	-75.260711°	4.2	2	9
12	3	Traffic Signal		1605	7027	00:04:23	227	5	40.271795°	-75.267033°	3.9	2	9
13	3	Traffic Signal		160	7187	00:04:52	256	22	40.271672°	-75.266623°	3.1	2	9
14	45	45 MPH Speed Limit Sign		157	7344	00:04:56	260	29	40.271422°	-75.266182°	3.1	2	9
15	45	45 MPH Speed Limit Sign		1583	8927	00:05:24	288	40	40.268710°	-75.261773°	3.4	2	8
16	16	School Zone Begin		639	9566	00:05:34	298	41	40.267618°	-75.279885°	3.6	2	9
17	17	School Zone End		1155	10721	00:05:54	318	35	40.265635°	-75.276750°	4.1	2	7
18	45	45 MPH Speed Limit Sign		108	10829	00:05:56	320	33	40.265457°	-75.276442°	4.2	2	8



**JAMAR**  
Technologies, Inc.

sales@jamartech.com • www.jamartech.com  
1-800-776-0940 • 1-215-361-2244  
1500 Industry Road, Suite C  
Hatfield, PA, USA 19440